



## Introducing the *NEW* Scheduler Module

**Tired of manually handling removable hard drives, CD's and DVD's that come from your CCTV inspection vehicle?**

**Want to reduce the costs associated with buying CD's and DVD's that end up in a juke box or as coffee cup coasters?**

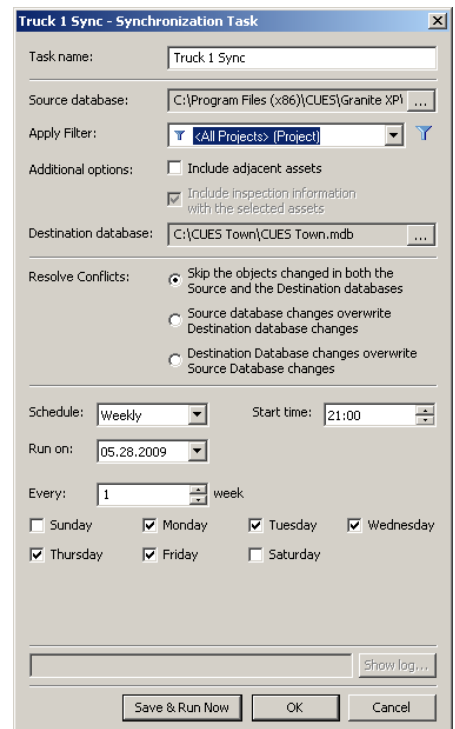
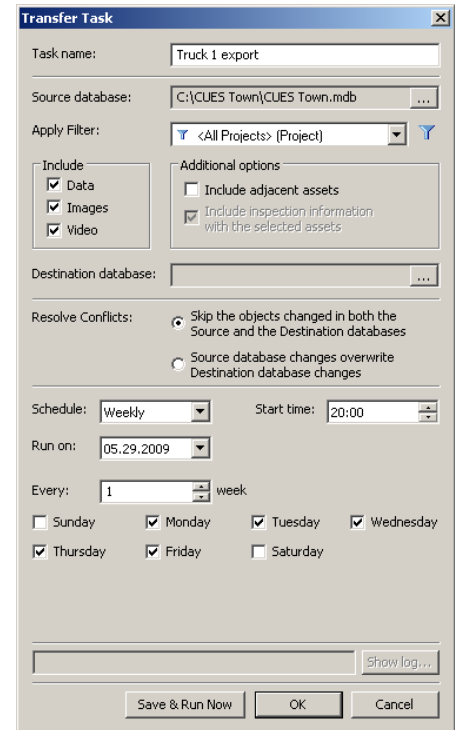
**Take the inconvenience out of your busy day and let the computer do the work with more precision!**

The Granite XP Scheduler Module allows users to schedule the transfer of CCTV data and media files, and perform database synchronization automatically. At specific times set by the administrator, i.e., each day after working hours when the network is less burdened, the CCTV inspection truck(s) can automatically export completed inspections from the truck to the office and synchronize incomplete inspections from the office to the truck to automate the transfer and archival of data on a daily, weekly or monthly schedule. On a daily basis, Supervisors can get their completed inspections, and CCTV crews can come in to work and find their new, incomplete inspections waiting for them to get started on. Physically carrying around disks is no longer necessary!

In addition to selecting complete or incomplete inspections, users will be able to create scheduled transfer tasks with specific pre-set filters to intelligently identify specific data to be transferred such as "inspections by " pipe type, operator, severity, date range, etc. Users can also schedule to send the data to an alternative destination for backup, third party review, regulatory requirement, etc. For example, on a daily basis, any inspection that has been found to have a collapsed pipe can be automatically transferred to a specific file location such as "Engineering\_Dept.mdb" so that engineering staff can review and manage these inspected assets appropriately in a timely fashion.

In a typical configuration, the service is activated and started from a network-connected office machine which has Granite XP and the "Granite XP Scheduler Module" installed on it. The service will sequentially poll each vehicle and perform the synchronization tasks automatically. It is also possible to activate the Scheduler Service from the truck as well, or to do both, as long as the module has been installed on the computer that will initiate the service.

The Scheduler Module can be activated on the Granite XP Inspection Edition, the Engineering Edition, and the Enterprise Edition.



## Scheduler Module

### Additional Details:

- A wireless or wired network connection to the truck is required (a wired network is recommended when transferring video)
- The Truck must be logged into the network (permission can be granted to a single folder to restrict access control)
- The computer's Hard Drives must be shared from the truck and viewable from the office computer
- Media catalogs in the truck and office must be set for UNC paths
- A synchronization log is created for each scheduled service transaction so that the user can review the details and identify any interruptions or failures that might have occurred.

Data and media are always retained on the remote computer as backup should the service need to be run again due to connectivity problems.

Simplify and automate your CCTV Inspection program with the Granite XP Scheduler Module!

Please contact Cues for a discussion and demonstration today.



- 1 The Scheduler Module is only installed on the computer that will initiate the data transfer operation (Export or Synchronization). It doesn't matter if that computer has an Engineering, Inspection, or Enterprise Edition.

- 2 With the Granite XP Scheduler Module, you can schedule reoccurring tasks for transferring data, media files, and performing database synchronization. The administrator sets the specific time(s) after working hours when the network is less burdened.

Name	Type	Schedule	Next run time	Status
Truck 1 export	Transfer	Weekly: Every ...	05.23.2009 20:00	Pending
Truck 1 Sync	Synchronization	Weekly: Every ...	05.28.2009 21:00	Pending

- 3 Truck(s) automatically upload completed inspections and pull down incomplete inspections to automate the transfer and archival of data on a daily, weekly or monthly schedule.

