



Introducing the *NEW* Granite XP *Quick Find & Filter* Features!

The Granite XP *Quick Find and Filter* features are powerful and flexible tools that allow you to search the Granite XP database for desired inspection record(s) based on specific criteria. Designed with the end-user in mind, the *Quick Find and Filter* features provide a fast and easy way to find precise information about an asset or inspection.

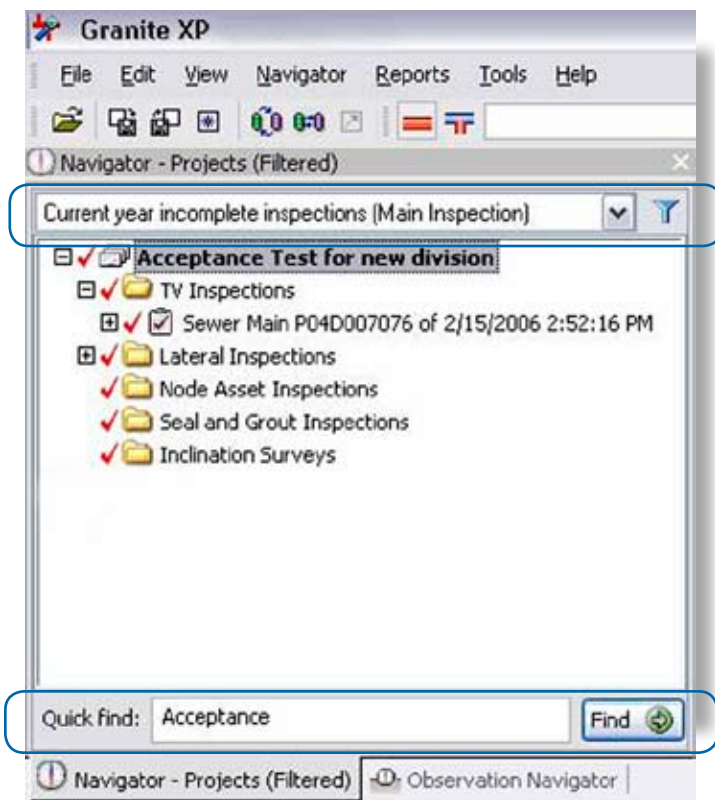
To meet the unique needs of each user, customized filters can be created/saved for future use. You can locate data within the database in two different ways: You can search for a specific project name or asset ID number using the *Quick Find* feature, or by selecting one of the existing filter profiles and/or creating your own customized filter profile.

With the **Filter** feature, you can:

- * Quickly select an existing filter preset or create custom filters
- * Manage and save custom filters for future reference
- * The system includes (2) filter modes, Simple and Advanced, to restrict the data displayed in the application and generated reports per the user's preferences. The results returned by the filters will match all specified properties simultaneously.
- * To aid in locating the correct structure upon which to initiate, view, report, or export an inspection, you can filter by Project, Structure, Inspection Information, Observation Information, and/or defined custom filters.

With the **Quick Find** feature, you can:

- * Quickly locate the needed structure or project



"The Standard of the Industry"



Scenarios/Examples – How the *Quick Find & Filter* features can benefit your organization!

1. I need to generate a report that shows all the lines that have severity greater than 5 with root blockage. I only have 20 minutes before I leave the office to attend the meeting.
2. Show me all the manholes with cross-over storm lines so that I can dye test these first for I & I (inflow & infiltration).
3. Show me all the lines that have been inspected by John Smith in the last quarter of 2005.
4. The city has been finding problems with PVC piping in the new sub-divisions. The city needs to evaluate the extent of the lines' failure in the 8" PVC mainline. Generate a report of all the 8" PVC lines in the sub-divisions.
5. We are making plans for the expected rehabilitation of the 10" VCP mainlines. Please provide a list of all the 10" VCP mainline constructed between 1939 and 1970.
6. Print a list of pipelines inspected in the last 5 years to create the budget forecast.
7. Show me all mainlines and manholes inspected last week.
8. Show me all the manholes that are classified as 'high risk' so that I can create a budget forecast for a manhole inspection crew.

Create Custom Filters Based on Your Needs!

When you use a filter, you select/apply criteria to display records that meet specific conditions. With Granite XP, you can now manage your personal custom filters and extract the necessary information. Each custom filter can be applied to any Granite XP data object. The filter profile feature is available in the Asset and Project Navigators, as well as in the report filter. An optional ArcGIS export profile can be retained for use with custom filters.

Use the Report Filter to perform the following:

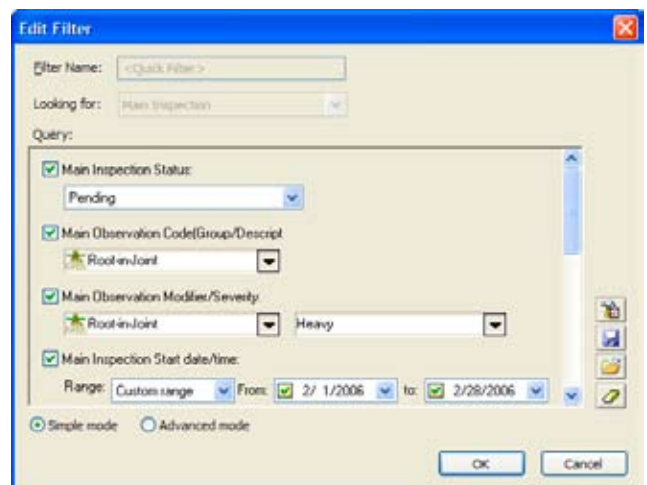
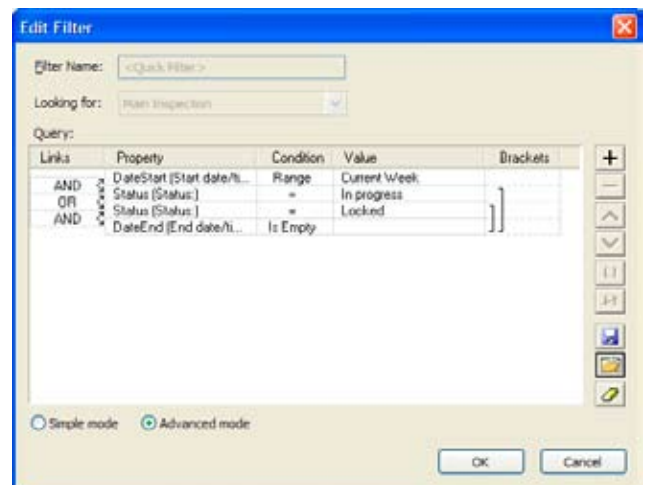
- * set up the filter name and profile
- * view query contents for the customized filter
- * preview/print the report filter

In the Edit Filter dialog box, you can:

- * view the desired objects to be filtered
- * select/deselect/reset the desired fields to be filtered

To filter Main Assets that are going to be exported from Granite XP to the ArcGIS database:

- * for any profile in the ArcGIS Integration Wizard dialog box, you can use the filter feature to select the asset records prior to exporting the asset data to ArcGIS.



The Filter feature gives you answers to tough questions - FAST!