

"The Standard of the Industry"



Welcome to **CUES** News



CUES QUICK ZOOMCAM II

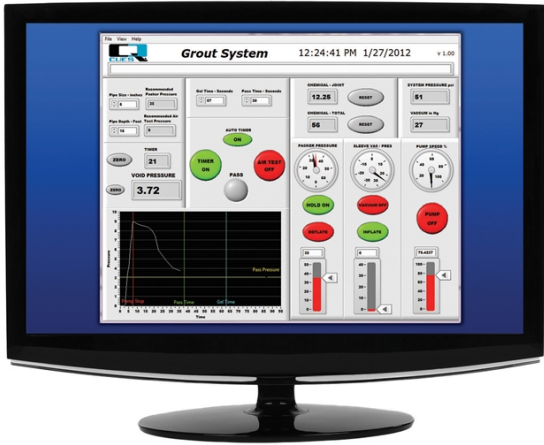
The **QZII** is a lightweight, portable, video inspection system that can be operated by one person! Perform swift inspections and surveys of pipelines, wet wells, manholes, sewer treatment plants, steam generators, tanks, vessels, and other areas that are difficult to reach. Accomplish safe-viewing in industrial or environmental areas with no man entry! The QZII is mounted on a lightweight carbon fiber adjustable telescopic pole that can extend up to 24' (an optional 34' pole is available). It features a 420:1 (35 optical/12 digital) zoom with

automatic focus and self-contained waterproof lighting for enhanced detailed viewing of cracks, breaks, pipe separations, scale, and various defect conditions from hundreds of feet away! QZII can be used to locate lateral services or to identify a blockage at a manhole, access port, or other entry point without entering the line or structure. To learn more about the CUES QZII, [contact your CUES Regional Sales Manager](#).

Visit the CUES Website

CUES EASY GROUT IS FEATURED IN THE CLEANER MAGAZINE

Mark French, CUES Business Developer, discusses the benefits of the Easy Grout system in the latest issue of the Cleaner magazine. Designed for ease of use, one of the system's most important features is an intuitive graphical user interface. [Click here](#) to read the article. For more information on the Easy Grout system, email us at salesinfo@cuesinc.com.



CUES ANNOUNCES 2 NEW CUESTIPS VIDEOS

CUES announces two new detailed CUESTIPs "How-To" training videos on TV cable repair. These videos provide complete step-by-step instructions on how to replace the cable end splice and pigtailed. They include everything you need to know about replacing your gold TV cable end, such as necessary tools, how to solder, what length to cut, and more. [Click here](#) to watch the trailer video on YouTube. To view both videos in their entirety, send us an e-mail at CUESTIPS@cuesinc.com and we'll send you the links to view them now!





VISIT CUES AT ONE OF THESE UPCOMING EVENTS

Taking pride in providing visibility of our American-made products, CUES regional sales professionals, along with over 20 authorized CUES dealerships, attend over 50 shows domestically and worldwide. The [CUES exhibitor schedule](#) is updated on a regular basis and can be viewed on the CUES website. Stop by and visit CUES at any of these shows to view the latest technology and speak with one of our [qualified representatives](#).



WANTED! Old CUES Equipment for the CUES History Museum

CUES has been a pioneer in the water, wastewater, and stormwater industries for over 50 years! We're in the process of tracing the story behind CUES equipment to help create a CUES History Museum at our national headquarters in Orlando, FL. Do you have an old camera or piece of equipment stuck away in a stockroom somewhere? We would love to hear from you and possibly put your old equipment in our museum. To learn more, [click here](#) or contact us at CUEStips@cuesinc.com.



Sent to: bweitzel@cuesinc.com

If you prefer not to receive future emails of this type, [Click Here](#).

Share



Sent by: CUES, 3600 Rio Vista Ave , Orlando FL 32805

powered by [actfemarketing](#)